

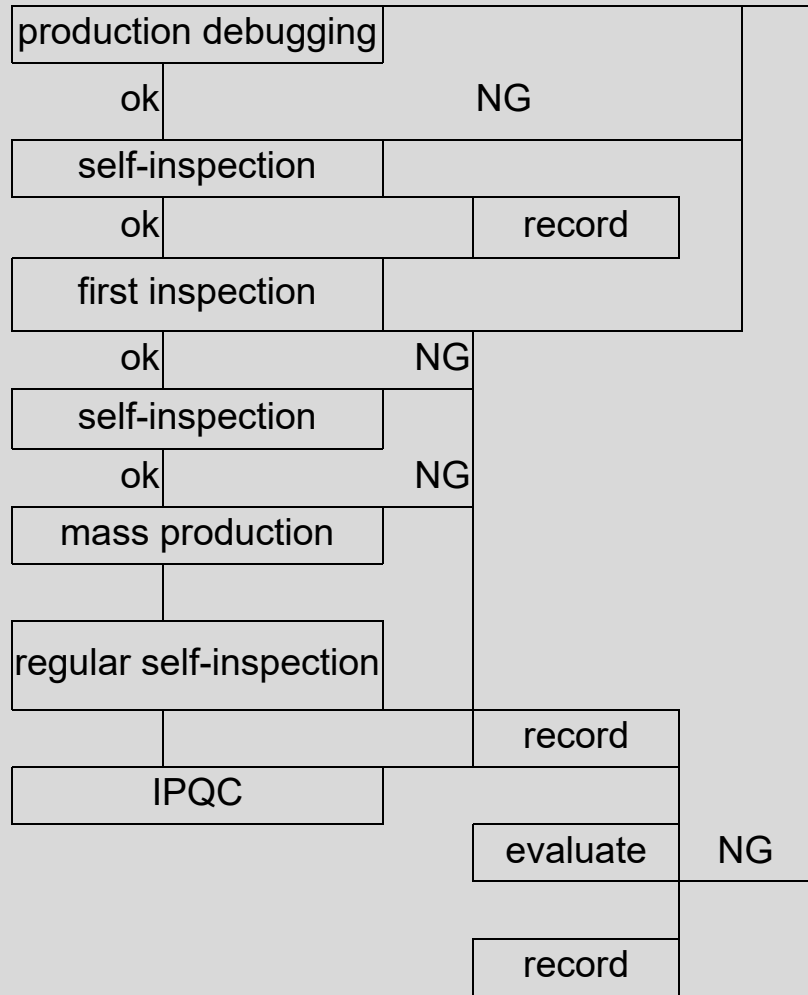
# INSPECTION FLOW

Ningbo Yinzhou Gain Machinery Co.,Ltd

[www.gainmachinery.com](http://www.gainmachinery.com) [admin@gainmachinery.com](mailto:admin@gainmachinery.com)

Tel: 0086-574-89216028

### Inspection flow of machining process



Person in charge	Content	Record form
Technician	Before mass production, the technician will debug the product and do self-inspection. The first piece will be inspected after passing the inspection, otherwise continues debugging.	
QC	QC inspected the first machining product, operator start production if it turns out qualified, otherwise technician continues debugging.	First inspection, self-inspection and in-process quality control record form.
Operator	Operator do self inspection to the first machining product, starting up if it turns out qualified, otherwise technician continues debugging.	
Operator	Start mass production.	
Operator	The operator shall do regular self-inspection and fill in the relevant inspection results.	First inspection, self-inspection and in-process quality control record form.
QC	QC shall do regular in-progress inspection and fill in the relevant inspection results.	
Operator QC	Production continues if products are evaluated to be qualified, otherwise shut down immediately and improved by technician The products produced during this period shall be marked and isolated, execute acc. to management of nonconforming product.	Unqualified label card